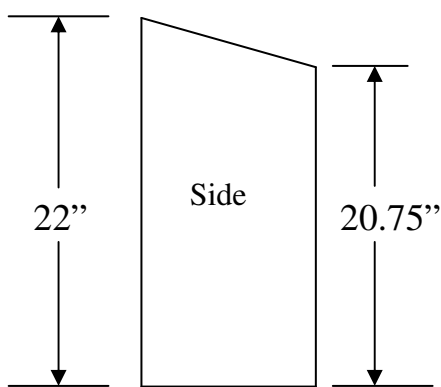
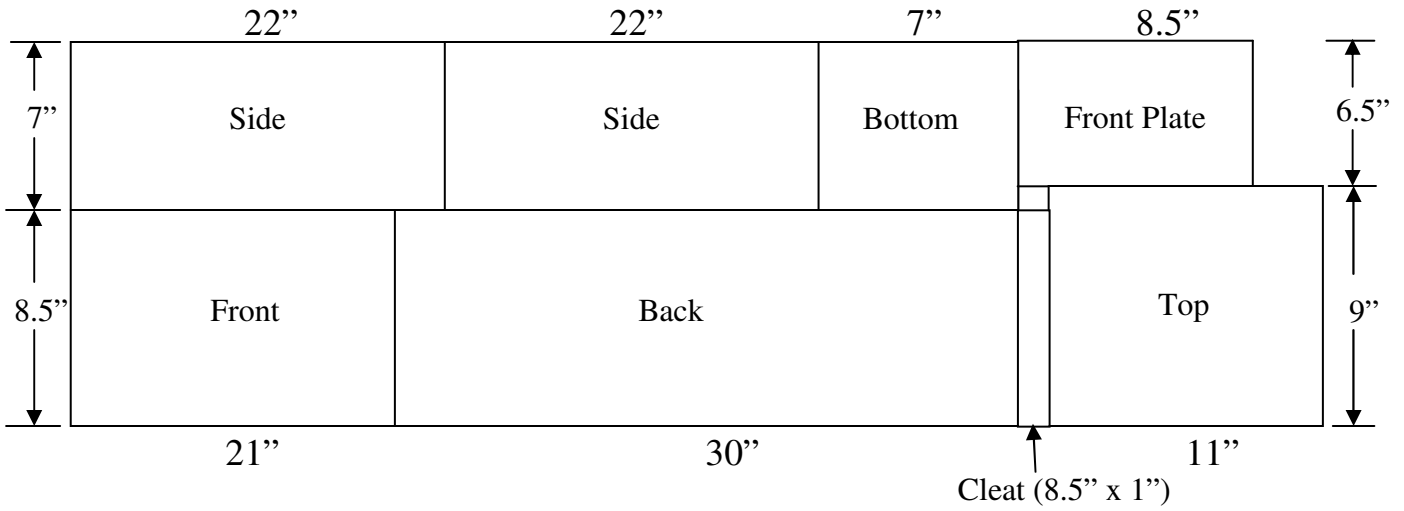
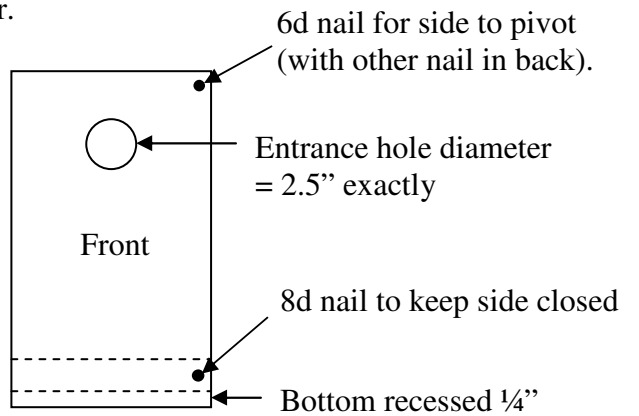


## FLICKER HOUSE

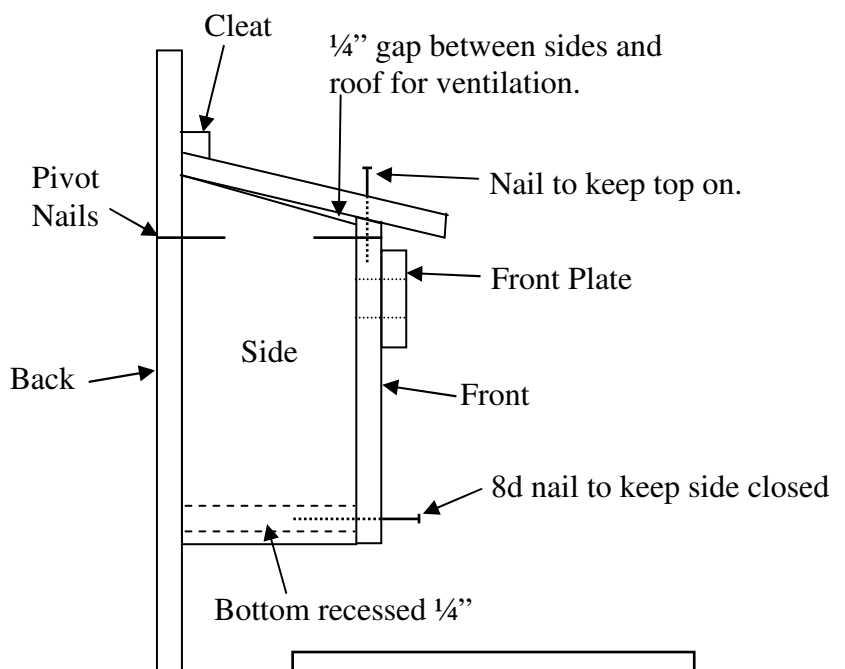
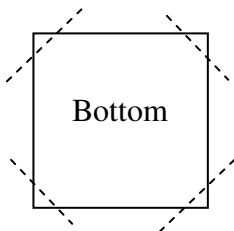
**Drawing not to scale.** Made from  $\frac{3}{4}$ " plywood. Finish, exterior only, with spar varnish if you like. For inspection, the top is held in place only by the cleat and a  $\frac{1}{4}$ " x 3" dowel, and one side pivots on 8d galvanized finishing nails and is held closed with another  $\frac{1}{4}$ " x 3" dowel. The front, back & other side are glued and screwed together. The cleat is glued and screwed to the back. The optional Front Plate has a centered 2.5" hole and is glued and screwed to the front of the house centered on the entrance hole. Place the house about 10 feet off the ground with entrance facing away from the prevailing winds and storms. **Print this on legal size paper.**



Top of hole exactly 2.5" below top of front so that bottom of hole is 15" above floor.



Cut  $\frac{3}{8}$ " -  $\frac{1}{2}$ " off each corner for drainage.



The front plate is a good idea especially for woodpecker houses! Consider filling the house with sawdust or bark chips at the beginning of each season. Woodpeckers like to carve out their own cavities and the filler material resembles the rotting heartwood of a host tree.

~11° angle cuts: top of front, cleat, & back of roof.